



# Real-Time Viewer

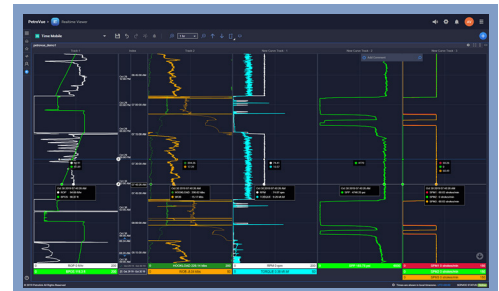
Your data, your displays under your control

**“Navigating drilling hazards today requires ever-increasing levels of vigilance. Unlock an immersive real-time environment and collaborate with your team like never before.”**

Intuitive and user driven, PetroVue Real-Time Viewer is a highly efficient real-time data monitoring application that gives you a consistent view of your data across your operations as it comes in from the rig. With just a few clicks it gives you the information you need, so you spend more time analyzing data instead of connecting and configuring displays. Built on a common visualization platform RTV tightly integrates with calculations and smart alerts running in the wider PetroVue environment. Create a template and share with colleagues immediately. Quickly visualize multiple widgets in one display that are linked and interconnected. And, easily compare real time data with historical data to make the best decisions for your drilling.

## RTV Templates

Build templates with just a few clicks. RTV templates consist of at least one RTV widget and can be connected to wellbore channels to visualize the data. Users with the correct permission can edit templates and those with Read only permission can also customize the templates but are not able to save the changes. Users can create their own templates and share them with other by making them public.

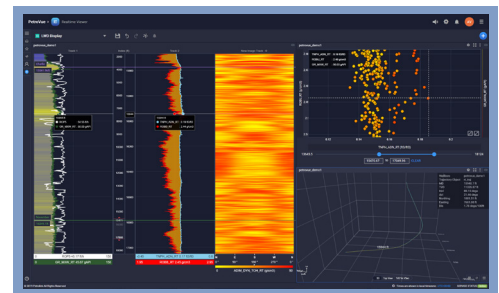


## RTV Widgets

Widgets are the main visualization elements. You can create templates using a selection of widgets. Once added to the template, widget communication is established.

Our list of widgets continues to grow to meet your needs.

- Log plot
- Tables
- Gauges (linear, digital, circular)
- Well status
- Well profile
- Cross-plot
- Bar chart
- Trajectory 2D/3D
- Multi well view
- Steering rose
- Drill bit
- Block height
- Label
- Well information
- BHA schematic



## Multi Tab Communication

Now with multi-tab communication, you can see the same context across all open widgets in different tabs, without having to spend time configuring. If you select a well for one widget, all other widgets will automatically show the same well data. If you navigate to a particular range, the other widgets will also move to that context saving time and making navigation easier.

## Integrated User Guide

The user guide is now fully integrated within the application and with smart search, the guidance you need is instantly at your fingertips.

## Data Export

Log plot and table data can be exported. CSV and LAS formats are supported.

## My View

Save a template configuration - open templates and window sizes can be preserved for future logins.

## User Profile

Make it your own with customization- change the preferred theme, language preference and password.

## Simple Alarms

Alarms can be configured using the gauge widget. Minimum and maximum thresholds are available. Flashing and audible alarm options are also available as well as desktop notifications for selected browsers (Chrome, Edge).

## Benefits

- Easy to use – build templates with a few clicks and with little training
- Integration with other apps, for example MBE alarms can be visualized on the time-based log plot in RTV with a single click
- Increased collaboration – create a template and easily share with others
- Combine widgets to visualize a range of data types from mudlogging and surface to MWD/LWD and cementing
- Intuitive – simple to use and make changes with minimal training



## FAQ's

**Which Browsers will be supported?**

Chrome and Edge (Chromium) are fully supported and recommended browsers.

**Does RTV support Browser scaling?**

RTV works best with scaling set to 100%. Changing the scale might affect some elements and is not recommended.

**Will RTV be accessible on Mobile devices?**

The PetroVue Mobile app is fully compatible with PetroVue RTV and allows users to view the well on a mobile device.

**Will RTV work against PetroVault Classic?**

No, RTV is not compatible with PetroVault Classic (PV2) and require ETP (PV3 and higher).

**I travel around and use a different computer at the office and rig – will I need to start from scratch each login?**

No, every update you make to templates is saved with your profile. PetroVue makes it simple to take the displays you need with you.

**What technology is RTV built on?**

RTV is one of the modules crafted using PetroVue framework which is built using the latest Angular framework.

Check out other PetroVue modules



Digital Well File



Manage by Exception



Data Studio



Identity Manager



# PetroVue Mobile

Get fast and secure access to your drilling data in real-time, whenever and wherever you need it.

A modern app for a mobile workforce, PetroVue Mobile gives you fast and secure access to your drilling data in real-time, whenever and wherever you need it. Connecting directly to the industry leader Petrovault(TM) data store, it displays time and depth-based data for all your active wells, giving you the information you need to positively impact your operations. User-friendly, PetroVue Mobile features an intuitive design, customizable displays for viewing your data with 24/7 support.

## PetroVue Mobile Benefits

Secure access to your wellsite data



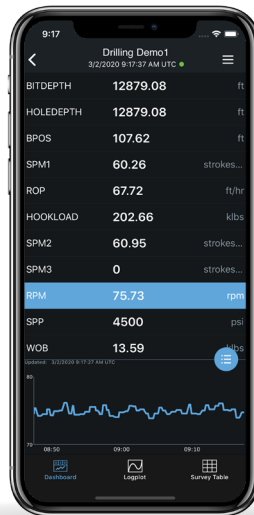
Enhanced viewing with customizable displays



List of all active wells



Favorite well feature



User-friendly navigation



Log plot with customizable tracks and channels



Dashboard with quick data preview



24/7 support

Designed with extensive user input, PetroVue Mobile is an innovative app that truly reflects today's oil and gas professional's needs.

